



# Franklin County Assessor Statistical Summary Report

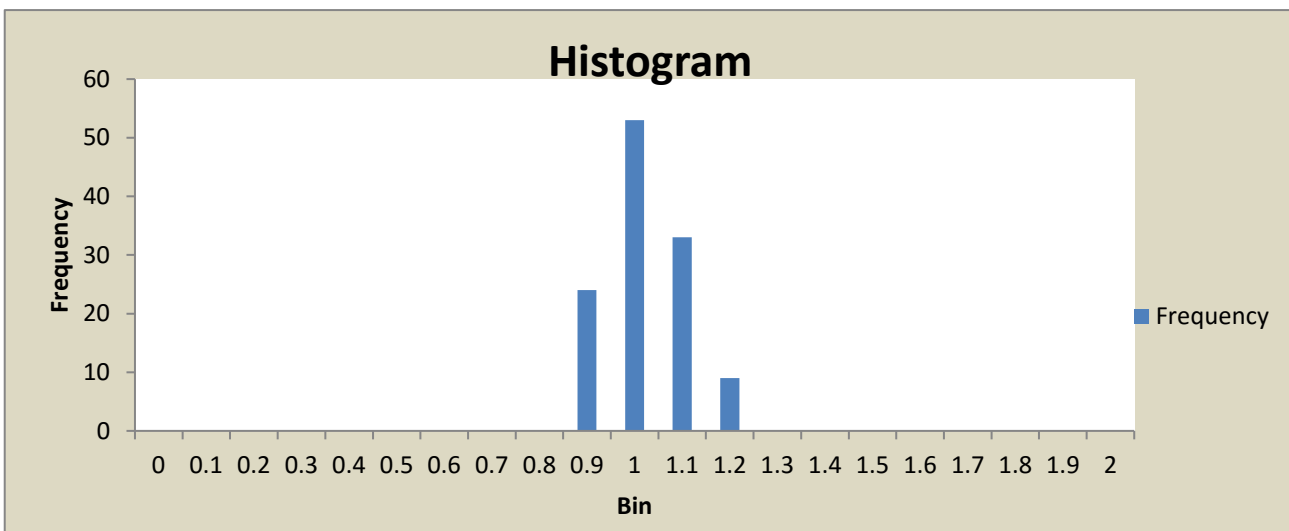
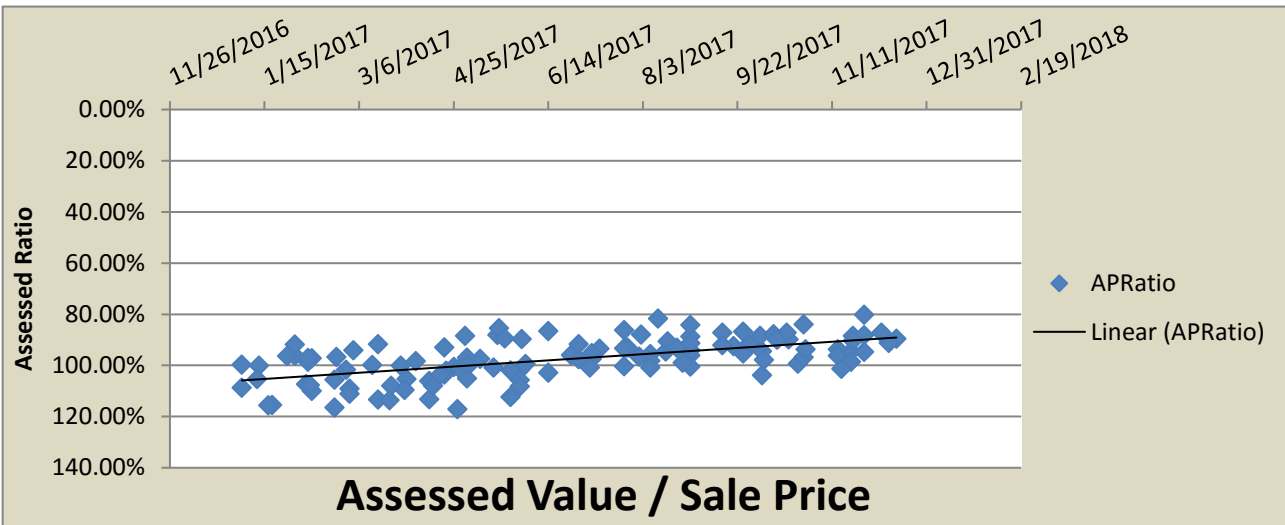
7/23/2018

SALES SELECTION INFORMATION			
Sale Date Range	<b>Start</b>	1/3/2017	<b>End Date</b> 12/15/2017
Statistical Study Area	301 LINDA LOVIISA		
Index Creation Date	07/23/18		
Number Of Sales In The Index	119		
Ratios Calculated Using	CURRENT APPRAISED VALUES		

## STATISTICAL ANALYSIS

Measure	Result
Sales Ratio Lo Range	80.20%
Sales Ratio Hi Range	117.04%
Mean	97.59%
Median	96.94%
Aggregate Mean	97.04%
Variance	0.00651
Standard Deviation	0.08069
Coefficient of Variation	0.08268
Average Absolute Deviation	0.06435
Coefficient of Dispersion	0.06638
Price Related Differential	1.00566

STYL	Average of APRatio
One Story	99.52%
Two Story	94.93%
<b>Grand Total</b>	<b>97.59%</b>



**Franklin County Assessor  
Statistical Summary Report**

7/23/2018

Parcel#	NBHD	Address	SaleDate	Sale_Price	APRatio	DeedType	Excise#	YR_BLT	STYL	SQ_FT	BSMT	QUAL	COND
117330282	301	4610 PHOENIX LN	3/28/2017	\$175,000	100.11%	SWD	54966	2011	One Story	1128		Fair+	Avg
117330161	301	5611 TOPEKA DR	1/3/2017	\$195,000	99.64%	SWD	54589	2008	One Story	1420		Fair+	Avg
117330328	301	4407 JUNEAU LN	4/12/2017	\$195,000	106.10%	SWD	55103	2012	One Story	1536		Fair+	Avg
117330247	301	4706 PHOENIX LN	2/9/2017	\$210,175	97.25%	SWD	54569	2010	One Story	1540		Fair+	Avg
117330215	301	4416 DES MOINES LN	3/3/2017	\$209,900	94.09%	SWD	54753	2010	One Story	1540		Fair+	Avg
117330487	301	5511 HARTFORD DR	4/21/2017	\$212,900	102.01%	SWD	55191	2017	One Story	1620		Fair+	Avg
117330494	301	4106 DES MOINES LN	5/9/2017	\$213,880	97.48%	SWD	55404	2017	One Story	1620		Fair+	Avg
117330493	301	4114 DES MOINES LN	5/18/2017	\$236,670	88.09%	SWD	55440	2017	One Story	1620		Fair+	Avg
117330496	301	4016 DES MOINES LN	5/30/2017	\$204,830	101.79%	SWD	55551	2017	One Story	1620		Fair+	Avg
117330492	301	4118 DES MOINES LN	6/2/2017	\$209,750	99.40%	SWD	55611	2017	One Story	1620		Fair+	Avg
117330660	301	4121 MONTGOMERY LN	8/15/2017	\$220,550	94.53%	SWD	56237	2017	One Story	1620		Fair+	Avg
117330646	301	3821 MONTGOMERY LN	8/28/2017	\$217,050	96.06%	SWD	56461	2017	One Story	1620		Fair+	Avg
117330651	301	3921 MONTGOMERY LN	8/28/2017	\$207,600	100.43%	SWD	56481	2017	One Story	1620		Fair+	Avg
117330249	301	4709 PHOENIX LN	8/2/2017	\$255,000	87.88%	SWD	56163	2010	One Story	1710		Fair+	Avg
117330251	301	4701 PHOENIX LN	10/5/2017	\$207,500	103.80%	SWD	56725	2011	One Story	1710		Fair+	Avg
117330395	301	4307 PHOENIX LN	4/20/2017	\$238,000	92.89%	SWD	55254	2014	One Story	1725		Fair+	Avg
117330123	301	4711 ATLANTA LN	5/31/2017	\$241,500	89.64%	SWD	55547	2009	One Story	1726		Fair+	Avg
117330622	301	5818 PIERRE DR	10/5/2017	\$231,320	94.50%	SWD	56720	2018	One Story	1726		Fair+	Avg
117330486	301	5515 HARTFORD DR	5/2/2017	\$214,530	105.02%	SWD	55301	2017	One Story	1727		Fair+	Avg
117330606	301	4018 MONTGOMERY LN	7/11/2017	\$230,170	93.45%	SWD	55936	2017	One Story	1727		Fair+	Avg
117330655	301	4017 MONTGOMERY LN	8/7/2017	\$228,315	95.61%	SWD	56214	2017	One Story	1727		Fair+	Avg
117330603	301	4110 MONTGOMERY LN	8/16/2017	\$244,370	90.60%	SWD	56243	2017	One Story	1727		Fair+	Avg
117330613	301	3910 MONTGOMERY LN	9/25/2017	\$226,565	94.45%	SWD	56641	2017	One Story	1727		Fair+	Avg
117330648	301	3909 MONTGOMERY LN	10/6/2017	\$222,100	97.83%	SWD	56818	2017	One Story	1727		Fair+	Avg
117330615	301	3902 MONTGOMERY LN	11/21/2017	\$229,910	94.51%	SWD	57127	2017	One Story	1727		Fair+	Avg
117330363	301	4116 ST PAUL LN	3/16/2017	\$240,000	91.70%	SWD	54840	2012	One Story	1730		Fair+	Avg
117330404	301	4316 ATLANTA LN	5/1/2017	\$258,000	88.41%	SWD	55309	2014	One Story	1849		Fair+	Avg
117330640	301	3912 DES MOINES LN	6/26/2017	\$240,200	95.96%	SWD	55834	2017	One Story	1852		Fair+	Avg
117330659	301	4117 MONTGOMERY LN	8/28/2017	\$255,470	88.66%	SWD	56539	2017	One Story	1852		Fair+	Avg
117330642	301	3904 DES MOINES LN	9/20/2017	\$245,030	92.43%	SWD	56581	2017	One Story	1852		Fair+	Avg
117330377	301	4312 PHOENIX LN	7/7/2017	\$257,000	95.17%	SWD	55949	2013	One Story	1982		Fair+	Avg
117330483	301	5609 HARTFORD DR	4/25/2017	\$239,227	100.57%	SWD	55327	2017	One Story	2010		Fair+	Avg
117330481	301	5703 HARTFORD DR	5/16/2017	\$238,715	100.78%	SWD	55419	2017	One Story	2010		Fair+	Avg
117330605	301	4102 MONTGOMERY LN	8/7/2017	\$240,070	98.17%	SWD	56201	2017	One Story	2010		Fair+	Avg
117330610	301	4002 MONTGOMERY LN	10/24/2017	\$238,300	99.37%	SWD	56874	2017	One Story	2010		Fair+	Avg
117330647	301	3905 MONTGOMERY LN	10/27/2017	\$244,725	96.76%	SWD	56943	2017	One Story	2010		Fair+	Avg
117330633	301	4009 DES MOINES LN	11/21/2017	\$249,970	98.61%	SWD	57173	2017	One Story	2010		Fair+	Avg
117330608	301	4010 MONTGOMERY LN	7/24/2017	\$293,685	86.24%	SWD	56048	2017	One Story	2141		Fair+	Avg
117330451	301	4206 PROVIDENCE LN	5/2/2017	\$266,760	96.94%	SWD	55322	2017	One Story	2143		Fair+	Avg
117330629	301	3905 DES MOINES LN	7/7/2017	\$263,530	97.48%	SWD	55914	2017	One Story	2143		Fair+	Avg
117330614	301	3906 MONTGOMERY LN	10/19/2017	\$280,350	89.81%	SWD	56846	2017	One Story	2143		Fair+	Avg
117330135	301	5614 AUSTIN DR	8/1/2017	\$260,000	96.61%	SWD	56145	2008	One Story	2148		Fair+	Avg
117330234	301	4315 DES MOINES LN	4/20/2017	\$240,000	103.54%	SWD	55220	2009	One Story	2148		Fair+	Avg
117330482	301	5613 HARTFORD DR	5/25/2017	\$236,340	112.33%	SWD	55510	2017	One Story	2300		Fair+	Avg
117330601	301	4118 MONTGOMERY LN	6/14/2017	\$253,220	102.87%	SWD	55691	2017	One Story	2300		Fair+	Avg
117330604	301	4106 MONTGOMERY LN	7/6/2017	\$264,294	100.87%	SWD	55909	2017	One Story	2300		Fair+	Avg
117330628	301	3821 DES MOINES LN	7/24/2017	\$266,975	100.34%	SWD	56045	2017	One Story	2300		Fair+	Avg
117330656	301	4101 MONTGOMERY LN	8/7/2017	\$256,140	100.80%	SWD	56171	2017	One Story	2300		Fair+	Avg
117330611	301	3918 MONTGOMERY LN	9/14/2017	\$298,570	87.24%	SWD	56527	2017	One Story	2300		Fair+	Avg
117330412	301	4120 ATLANTA LN	10/28/2017	\$218,000	93.71%	SWD	56955	2016	One Story	1388		Avg	Avg
117330452	301	4202 PROVIDENCE LN	2/27/2017	\$205,250	101.72%	SWD	54718	2017	One Story	1600		Avg	Avg
117330476	301	5704 CONCORD DR	3/1/2017	\$203,250	109.12%	SWD	54745	2016	One Story	1620		Avg	Avg
117330459	301	5703 CONCORD DR	1/3/2017	\$219,900	108.64%	SWD	54348	2017	One Story	1620		Avg	Avg
117330462	301	5609 CONCORD DR	2/9/2017	\$203,211	109.93%	SWD	54604	2017	One Story	1620		Avg	Avg

**Franklin County Assessor  
Statistical Summary Report**

7/23/2018

117330488	301	5507 HARTFORD DR	4/12/2017	\$197,450	113.19%	SWD	55138	2017	One Story	1620	Avg	Avg
117330472	301	5606 CONCORD DR	2/6/2017	\$216,460	107.36%	SWD	54549	2017	One Story	1697	Avg	Avg
117330491	301	4122 DES MOINES LN	1/12/2017	\$228,870	100.01%	SWD	54468	2017	One Story	1727	Avg	Avg
117330499	301	4111 DES MOINES LN	1/31/2017	\$244,675	96.16%	SWD	54520	2017	One Story	1727	Avg	Avg
117330467	301	4207 JUNEAU LN	3/16/2017	\$203,420	113.36%	SWD	54856	2017	One Story	1727	Avg	Avg
117330499	301	4111 DES MOINES LN	10/4/2017	\$266,000	88.45%	SWD	56721	2017	One Story	1727	Avg	Avg
117330480	301	5707 HARTFORD DR	3/1/2017	\$214,650	111.11%	SWD	54746	2016	One Story	1852	Avg	Avg
117330498	301	4107 DES MOINES LN	3/13/2017	\$247,710	99.87%	SWD	54828	2017	One Story	1859	Avg	Avg
117330495	301	4102 DES MOINES LN	3/31/2017	\$227,320	105.27%	SWD	55010	2017	One Story	1870	Avg	Avg
117330454	301	4110 PROVIDENCE LN	2/8/2017	\$234,770	107.76%	SWD	54612	2017	One Story	2000	Avg	Avg
117330461	301	5613 CONCORD DR	2/21/2017	\$239,920	105.53%	SWD	54674	2017	One Story	2012	Avg	Avg
117330453	301	4114 PROVIDENCE LN	4/27/2017	\$243,500	117.04%	SWD	55272	2017	One Story	2258	Avg	Avg
117330484	301	5605 HARTFORD DR	3/23/2017	\$258,425	107.92%	SWD	54925	2016	One Story	2297	Avg	Avg
117330460	301	5617 CONCORD DR	1/19/2017	\$242,335	115.41%	SWD	54421	2017	One Story	2300	Avg	Avg
117330489	301	5503 HARTFORD DR	2/21/2017	\$237,770	116.49%	SWD	54656	2017	One Story	2300	Avg	Avg
117330657	301	4105 MONTGOMERY LN	11/28/2017	\$290,000	80.20%	SWD	57209	2017	Two Story	2136	Fair+	Avg
117330649	301	3913 MONTGOMERY LN	12/15/2017	\$249,150	89.62%	SWD	57362	2017	Two Story	2136	Fair+	Avg
117330339	301	5714 SACRAMENTO DR	5/19/2017	\$277,900	85.42%	SWD	55480	2011	Two Story	2140	Fair+	Avg
117330485	301	5601 HARTFORD DR	5/25/2017	\$241,000	101.90%	SWD	55503	2017	Two Story	2168	Fair+	Avg
117330478	301	5712 CONCORD DR	5/30/2017	\$233,120	105.69%	SWD	55559	2017	Two Story	2168	Fair+	Avg
117330607	301	4014 MONTGOMERY LN	8/24/2017	\$234,200	98.93%	SWD	56341	2017	Two Story	2168	Fair+	Avg
117330617	301	3816 MONTGOMERY LN	8/28/2017	\$254,460	94.04%	SWD	56436	2017	Two Story	2168	Fair+	Avg
117330652	301	4005 MONTGOMERY LN	9/28/2017	\$257,420	91.67%	SWD	56703	2017	Two Story	2168	Fair+	Avg
117330626	301	5815 PIERRE DR	11/14/2017	\$254,800	93.68%	SWD	57075	2017	Two Story	2168	Fair+	Avg
117330644	301	5903 PIERRE DR	11/28/2017	\$248,450	94.70%	SWD	57191	2017	Two Story	2168	Fair+	Avg
117330621	301	5822 PIERRE DR	12/11/2017	\$262,955	91.23%	SWD	57310	2017	Two Story	2168	Fair+	Avg
117330222	301	4302 DES MOINES LN	5/30/2017	\$215,000	108.18%	SWD	55537	2009	Two Story	2232	Fair+	Avg
117330283	301	4611 PHOENIX LN	6/14/2017	\$278,000	86.54%	SWD	55723	2010	Two Story	2232	Fair+	Avg
117330212	301	4419 MONTGOMERY LN	11/22/2017	\$255,000	88.47%	SWD	57158	2010	Two Story	2232	Fair+	Avg
117330635	301	4012 DES MOINES LN	6/30/2017	\$248,430	97.61%	SWD	55869	2017	Two Story	2293	Fair+	Avg
117330653	301	4009 MONTGOMERY LN	8/28/2017	\$290,900	84.15%	SWD	56463	2017	Two Story	2293	Fair+	Avg
117330618	301	5910 PIERRE DR	9/14/2017	\$274,800	92.10%	SWD	56558	2017	Two Story	2293	Fair+	Avg
117330602	301	4114 MONTGOMERY LN	11/28/2017	\$286,290	88.19%	SWD	57178	2017	Two Story	2293	Fair+	Avg
117330631	301	3913 DES MOINES LN	10/18/2017	\$302,900	87.15%	SWD	56827	2017	Two Story	2483	Fair+	Avg
117330619	301	5906 PIERRE DR	12/7/2017	\$294,934	87.13%	SWD	57269	2017	Two Story	2483	Fair+	Avg
117330153	301	5510 SPRINGFIELD DR	1/27/2017	\$259,900	96.34%	SWD	54481	2008	Two Story	2501	Fair+	Avg
117330258	301	5312 MONTPELIER DR	2/22/2017	\$265,000	96.75%	SWD	54680	2010	Two Story	2501	Fair+	Avg
117330289	301	4417 PHOENIX LN	2/7/2017	\$249,900	98.63%	SWD	54559	2011	Two Story	2512	Fair+	Avg
117330632	301	4005 DES MOINES LN	8/28/2017	\$294,560	91.35%	SWD	56386	2017	Two Story	2535	Fair+	Avg
117330167	301	4603 LANSING LN	9/25/2017	\$282,000	95.31%	SWD	56637	2008	Two Story	2707	Fair+	Avg
117330380	301	4220 PHOENIX LN	7/26/2017	\$295,000	93.11%	SWD	56141	2013	Two Story	2828	Fair+	Avg
117330627	301	3817 DES MOINES LN	7/24/2017	\$301,905	93.27%	SWD	56044	2017	Two Story	2828	Fair+	Avg
117330625	301	5811 PIERRE DR	8/11/2017	\$285,080	81.73%	SWD	56229	2017	Two Story	2828	Fair+	Avg
117330650	301	3917 MONTGOMERY LN	9/25/2017	\$313,770	86.78%	SWD	56634	2017	Two Story	2828	Fair+	Avg
117330634	301	4013 DES MOINES LN	10/27/2017	\$338,300	83.97%	SWD	56977	2017	Two Story	2828	Fair+	Avg
117330616	301	3820 MONTGOMERY LN	11/14/2017	\$284,220	96.22%	SWD	57057	2017	Two Story	2828	Fair+	Avg
117330654	301	4013 MONTGOMERY LN	6/30/2017	\$314,895	91.64%	SWD	55879	2017	Two Story	2926	Fair+	Avg
117330630	301	3909 DES MOINES LN	8/21/2017	\$298,885	93.07%	SWD	56299	2017	Two Story	2926	Fair+	Avg
117330368	301	4215 ST PAUL LN	10/11/2017	\$342,000	87.80%	SWD	56778	2013	Two Story	3068	Fair+	Avg
117331012	301	5201 HONOLULU DR	5/22/2017	\$254,000	89.48%	SWD	55478	2017	Two Story	1832	Avg	Avg
117331011	301	5205 HONOLULU DR	1/31/2017	\$259,000	91.81%	SWD	54528	2016	Two Story	2136	Avg	Avg
117330475	301	5618 CONCORD DR	2/7/2017	\$255,303	97.10%	SWD	54558	2016	Two Story	2168	Avg	Avg
117330439	301	4019 ST PAUL LN	10/13/2017	\$273,000	89.96%	SWD	56785	2016	Two Story	2168	Avg	Avg
117330458	301	5707 CONCORD DR	1/17/2017	\$219,900	115.55%	SWD	54420	2017	Two Story	2168	Avg	Avg
117330465	301	5519 CONCORD DR	4/18/2017	\$241,320	103.51%	SWD	55176	2017	Two Story	2168	Avg	Avg
117330456	301	4102 PROVIDENCE LN	4/5/2017	\$279,365	98.36%	SWD	55063	2017	Two Story	2492	Avg	Avg

**Franklin County Assessor  
Statistical Summary Report**

7/23/2018

117330468	301	4115 JUNEAU LN	5/2/2017	\$279,100	99.53%	SWD	55319	2017	Two Story	2568	Avg	Avg
117330477	301	5708 CONCORD DR	3/22/2017	\$243,020	113.57%	SWD	54881	2016	Two Story	2632	Avg	Avg
117330469	301	5514 CONCORD DR	3/30/2017	\$261,770	109.52%	SWD	54975	2017	Two Story	2792	Avg	Avg
117330470	301	5518 CONCORD DR	4/28/2017	\$280,815	101.06%	SWD	55273	2017	Two Story	2792	Avg	Avg
117330434	301	4108 ST PAUL LN	11/22/2017	\$329,900	90.33%	SWD	57193	2016	Two Story	2819	Avg	Avg
117330500	301	4115 DES MOINES LN	1/11/2017	\$290,150	105.32%	SWD	54386	2017	Two Story	2926	Avg	Avg
117330479	301	5711 HARTFORD DR	4/14/2017	\$280,750	107.92%	SWD	55126	2017	Two Story	2926	Avg	Avg
117330490	301	5419 HARTFORD DR	5/3/2017	\$307,400	99.86%	SWD	55338	2017	Two Story	2952	Avg	Avg
117330624	301	5810 PIERRE DR	11/16/2017	\$318,300	101.28%	SWD	57077	2017	Two Story	2696	Avg+	Avg