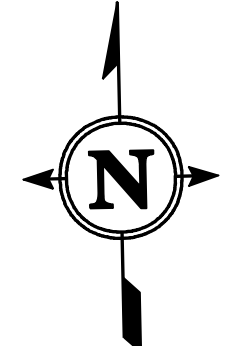
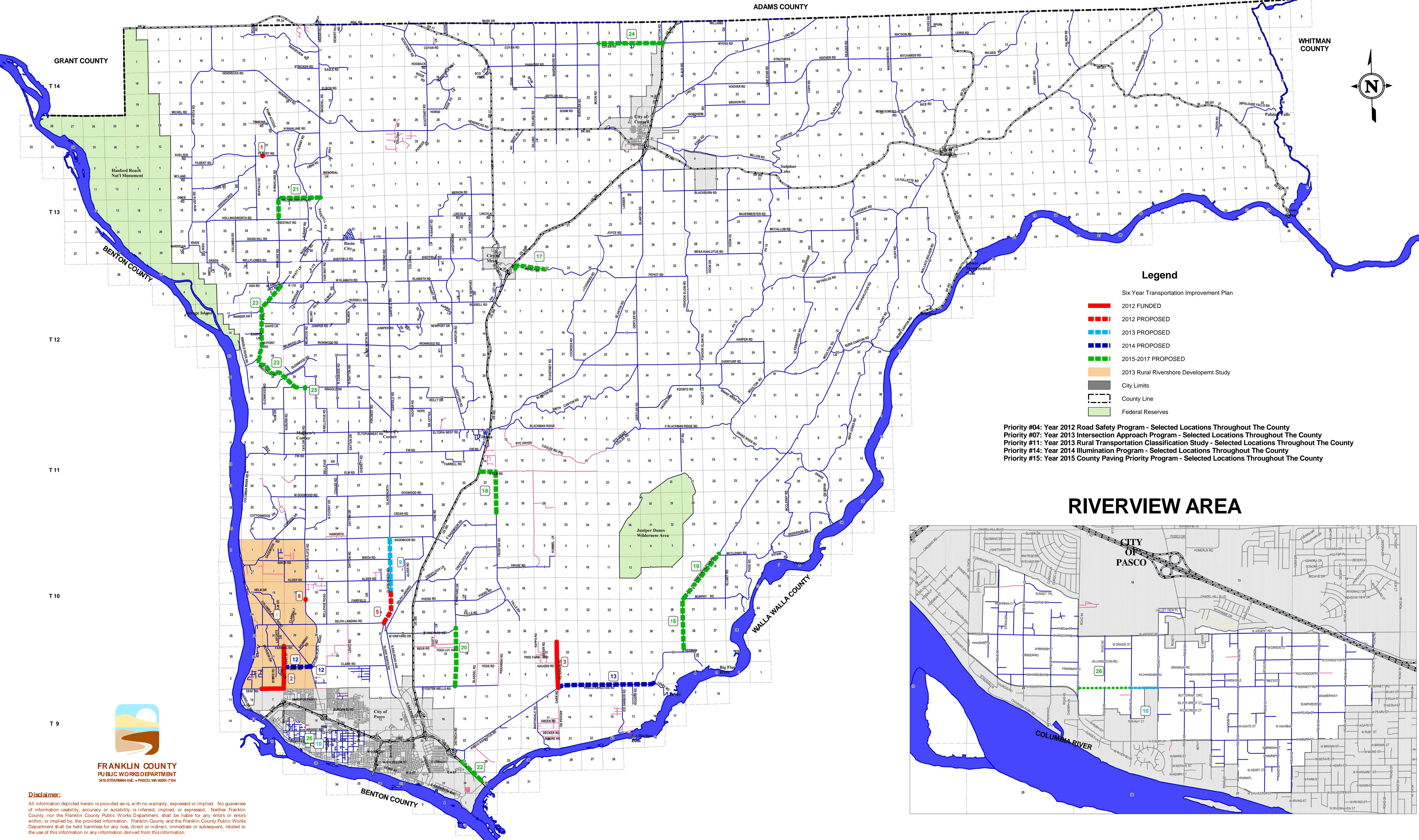


FRANKLIN COUNTY, WASHINGTON SIX YEAR TRANSPORTATION IMPROVEMENT PLAN 2012-2017

R 27 R 28 R 29 R 30 R 31 R 32 R 33 R 34 R 35 R 36 R 37

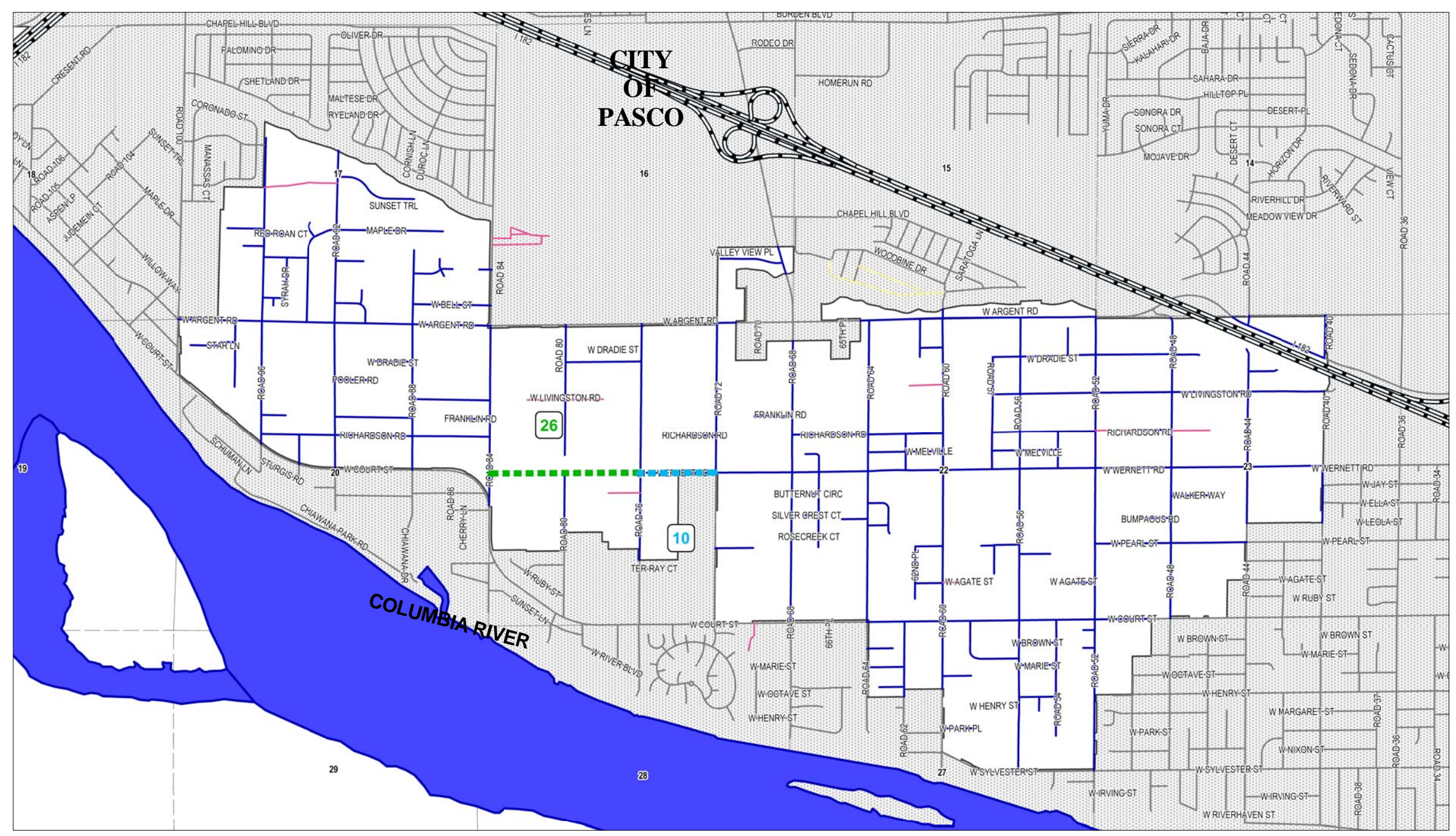


Legend

- Six Year Transportation Improvement Plan
- 2012 FUNDED
- 2012 PROPOSED
- 2013 PROPOSED
- 2014 PROPOSED
- 2015-2017 PROPOSED
- 2013 Rural Rivershore Developem Study
- City Limits
- County Line
- Federal Reserves

Priority #04: Year 2012 Road Safety Program - Selected Locations Throughout The County
 Priority #07: Year 2013 Intersection Approach Program - Selected Locations Throughout The County
 Priority #11: Year 2013 Rural Transportation Classification Study - Selected Locations Throughout The County
 Priority #14: Year 2014 Illumination Program - Selected Locations Throughout The County
 Priority #15: Year 2015 County Paving Priority Program - Selected Locations Throughout The County

RIVERVIEW AREA



Disclaimer:
 All information depicted herein is provided as-is, with no warranty, expressed or implied. No guarantee of information usability, accuracy or suitability is inferred, implied, or expressed. Neither Franklin County, nor the Franklin County Public Works Department, shall be liable for any errors or omissions within, or implied by, the provided information. Franklin County and the Franklin County Public Works Department shall be held harmless for any loss, direct or indirect, immediate or subsequent, related to the use of this information or any information derived from this information.