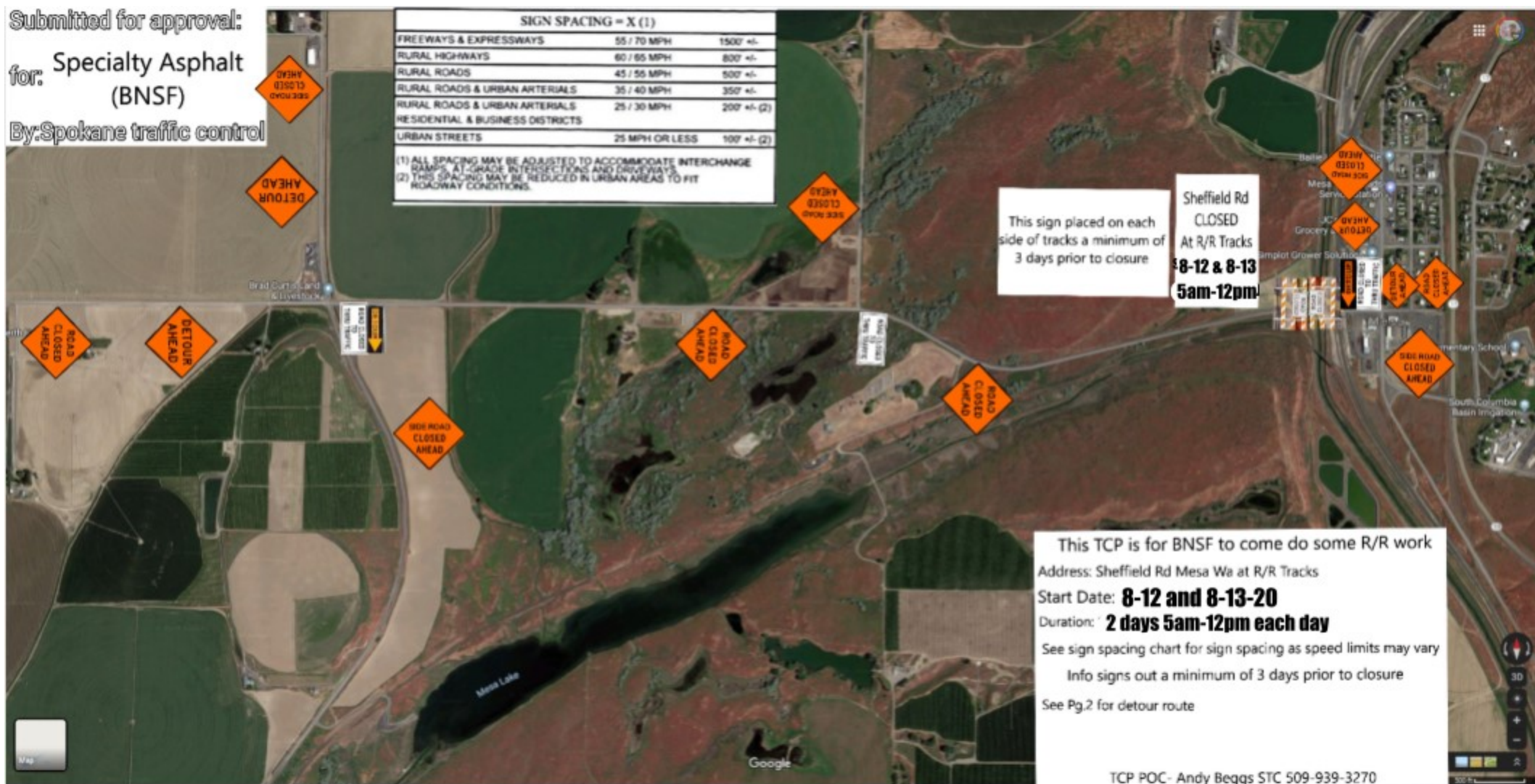


Submitted for approval:
for: Specialty Asphalt
(BNSF)
By: Spokane traffic control

SIGN SPACING = X (1)		
FREWAYS & EXPRESSWAYS	55 / 70 MPH	1500' +/-
RURAL HIGHWAYS	60 / 65 MPH	800' +/-
RURAL ROADS	45 / 55 MPH	500' +/-
RURAL ROADS & URBAN ARTERIALS	35 / 40 MPH	350' +/-
RURAL ROADS & URBAN ARTERIALS	25 / 30 MPH	200' +/- (2)
RESIDENTIAL & BUSINESS DISTRICTS		
URBAN STREETS	25 MPH OR LESS	100' +/- (2)

(1) ALL SPACING MAY BE ADJUSTED TO ACCOMMODATE INTERCHANGE RAMP'S, AT-GRADE INTERSECTIONS AND DRIVEWAYS
(2) THIS SPACING MAY BE REDUCED IN URBAN AREAS TO FIT ROADWAY CONDITIONS.



This sign placed on each side of tracks a minimum of 3 days prior to closure

Sheffield Rd
CLOSED
At R/R Tracks
8-12 & 8-13
5am-12pm

This TCP is for BNSF to come do some R/R work
Address: Sheffield Rd Mesa Wa at R/R Tracks
Start Date: **8-12 and 8-13-20**
Duration: **2 days 5am-12pm each day**
See sign spacing chart for sign spacing as speed limits may vary
Info signs out a minimum of 3 days prior to closure
See Pg.2 for detour route

TCP POC - Andy Beggs STC 509-939-3270